



'A Society Where Neighbours Come Together To Create Safer, Stronger And Active Communities'

Ruwan Uduwera-Perera
Director of Policing, Criminology & Justice
University of East London



The Guardian

Only 40% of people in England trust their police force, research reveals (Dodd, 2024)



Metropolitan Police scores lowest in public confidence, with women trusting London officers even less than men.





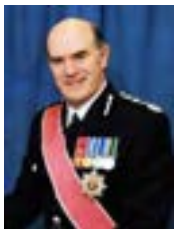
“The Police are the Public, and the Public are the Police...”

Rowan and Mayne, 1829



“Policing is at a major turning point where it must rebuild trust with the public”

Cooke, 2023



“Policing is far too important to be left to the police alone”

Flanagan, 2008

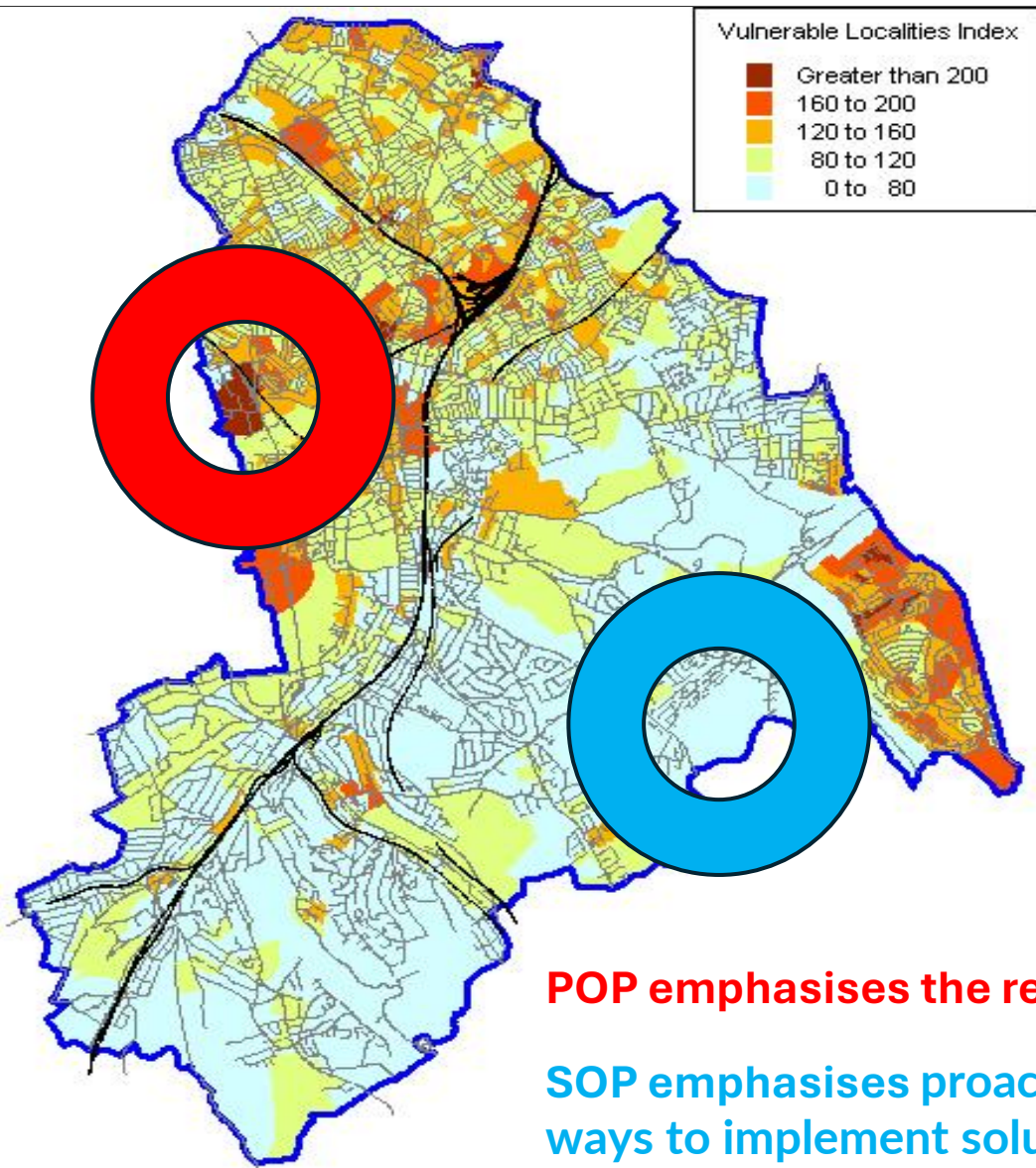


Nine
les
ng -

‘To maintain at all times a relationship with the public that gives reality to the historic tradition that the police are the public and that the public are the police, the police being only members who are paid to give full time attention which are incumbent on every citizen in the interests of community welfare and licence’
(Rowan & Mayne, 1923)

...the police are the public and that the public are the police.





Identify Problems, but Not Solutions

- 🚔 Crime statistics - burglary dwelling, criminal damage to dwellings
- 🚔 Hate Crimes and racial incidents,
- 🚔 Deprivation statistics - income deprivation and employment deprivation,
- 🚔 Education statistics - educational attainment,
- 🚔 Health factors
- 🚔 Demographic statistics – the proportion of young people between 15-24 years of age

POP emphasises the response to the perceived problem

SOP emphasises proactiveness and initiative to seek ways to implement solutions

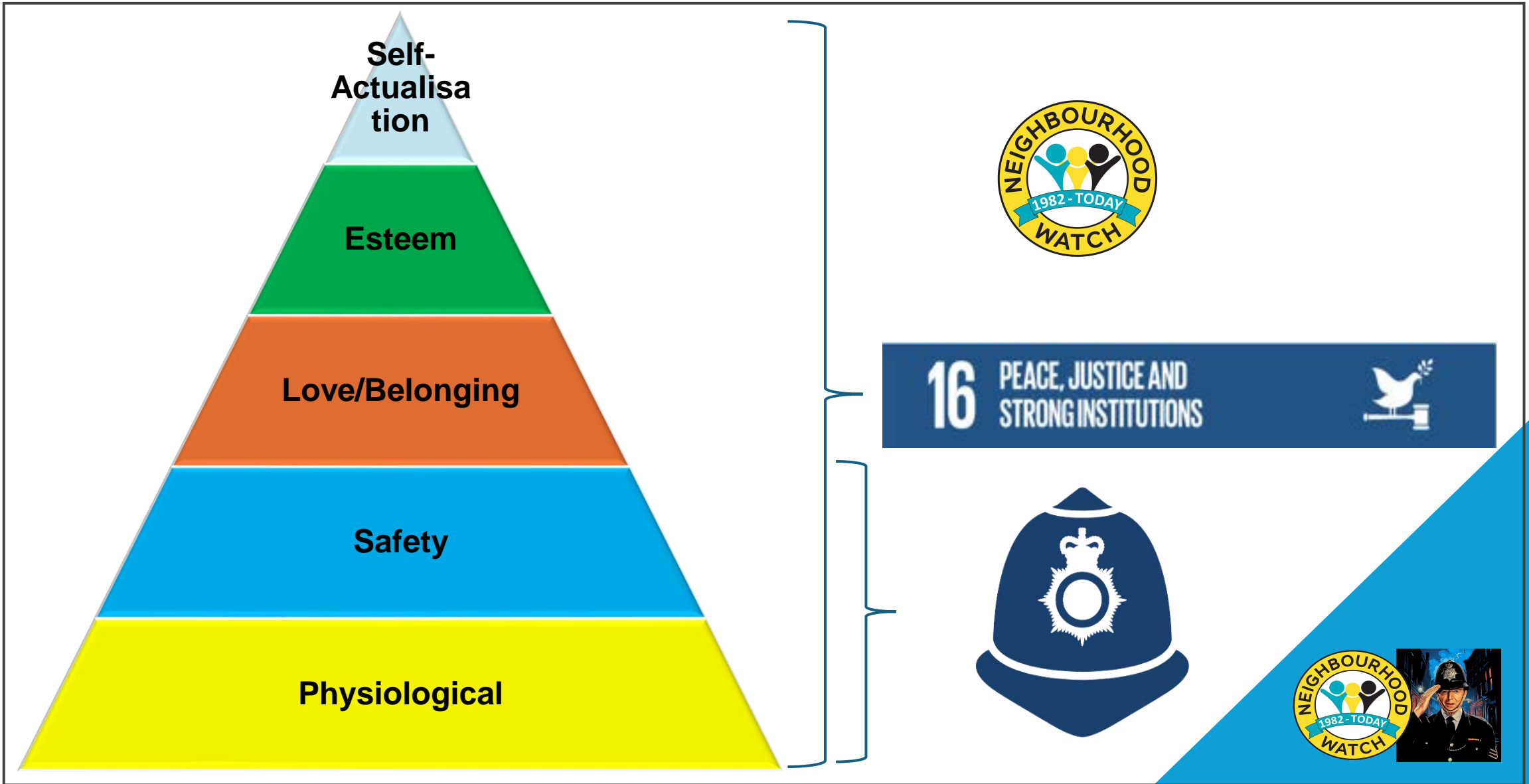


The Solutions Focus

Solution-Oriented	Problem-Oriented
<ul style="list-style-type: none">• What's wanted	<ul style="list-style-type: none">• What's wrong
<ul style="list-style-type: none">• What's working	<ul style="list-style-type: none">• What needs fixing
<ul style="list-style-type: none">• Progress	<ul style="list-style-type: none">• Blame
<ul style="list-style-type: none">• Influence	<ul style="list-style-type: none">• Control
<ul style="list-style-type: none">• "Counter" in the past	<ul style="list-style-type: none">• Causes in the past
<ul style="list-style-type: none">• Collaboration	<ul style="list-style-type: none">• The expert knows best
<ul style="list-style-type: none">• Resources and Strengths	<ul style="list-style-type: none">• Deficits and Weaknesses
<ul style="list-style-type: none">• Simplicity	<ul style="list-style-type: none">• Complications
<ul style="list-style-type: none">• Action	<ul style="list-style-type: none">• Definitions

(Jackson & McKergow, 2006)





Self-Actualisation

Esteem

Love/Belonging

Safety

Physiological



16 PEACE, JUSTICE AND STRONG INSTITUTIONS



Neighbourhood Watch	UN Sustainable Development Goals
<p>Neighbourly:</p> <p>We aspire to be good neighbours.</p>	<p>Promote peaceful and inclusive societies: A neighbourhood that actively fosters good relationships between residents is less likely to experience crime or conflict.</p>
<p>Community focused:</p> <p>We bring people together.</p>	<p>Building effective, accountable, and inclusive institutions: Community gatherings or initiatives that involve citizens in local governance or safety measures.</p>
<p>Inclusive:</p> <p>We are welcoming to all people.</p>	<p>Inclusive Societies: Creating spaces where all individuals feel valued and included, thereby ensuring equality of opportunities.</p>

Neighbourhood Watch	UN Sustainable Development Goals
<p>Proactive:</p> <p>We are active within communities, and we are relevant in today's world.</p>	<p>Conflict prevention and peacebuilding: The emphasis is on taking preventative action to address underlying causes of conflict or instability rather than simply reacting to problems.</p>
<p>Trusted:</p> <p>We are dependable, caring, respectable, approachable and supportive.</p>	<p>Building accountable and transparent institutions: Fostering stronger relationships within communities by ensuring that individuals feel safe and supported by their local governance structures.</p>
<p>Collaborative:</p> <p>We work as a team, in partnerships and within communities.</p>	<p>Partnerships for Peace: Collaboration between citizens, local authorities, law enforcement, and other community groups is key to fostering a sense of collective responsibility and achieving long-term social cohesion</p>

