

# TOP TIPS

## ✓ DO

- Buy the best lock you can afford in relation to the value of your bike
- Insure your bike if it is high value
- Keep your bike secured and out of sight in a locked or alarmed shed/outbuilding/secured side alley
- Think about how to slow down a thief: make sure the lock is a tight fit and hard to access
- When away from home, pick a place that is very public, well-lit, and has CCTV
- Avoid leaving your bike in communal hallways
- Remove accessories such as lights when bike is left
- Consider a quick-release saddle that you can take away with you, to make it less tempting to ride the bike away
- Make sure quick-release wheels are securely locked
- Fit a hidden tracker on an expensive bike
- Take photos and keep a note of serial number and unusual features
- Register your bike

## ✗ DON'T...

- ...show your bike on social media – it could be targeted by thieves
- ...use a locking device that can be cut through easily and quickly
- ...lock or lean your bike against railings, signposts, lamp columns, street signs, trees and tree guards, sides of bus shelters
- ...always leave your bike in the same predictable place

## HOW TO REGISTER YOUR BIKE

Register free on [www.bikeregister.com](http://www.bikeregister.com) and join the UK's national, police-preferred bicycle marking and registration scheme.

## HOW TO REPORT BIKE THEFT

It is worth reporting to the police – many bikes are found but can't be reunited with owners.

**ACT FAST:** call 101 or report online with frame number, cycle database number, a photo and any other details.

Make sure you update the status on the cycle database where you registered it – the sooner the better to help stop it being sold on.

<https://www.thamesvalley.police.uk/ro/report/ocr/af/how-to-report-a-crime/>

## HOW TO BUY A SECOND-HAND BIKE SAFELY

- We recommend you buy your second-hand bike from a shop or direct from the manufacturer online.
- If you do buy from another person, you need to be careful of possible stolen bikes.

Questions to ask if buying second-hand (to stop thieves re-selling):

- How long have you owned the bike?
- Have you got the receipt?
- Has the bike been serviced or had work done?

Find the frame serial number and check BikeRegister online.

## USEFUL SOURCES OF INFORMATION

<https://www.soldsecure.com>

<https://www.securedbydesign.com>

<https://www.immobilise.com>



[www.ourwatch.org.uk](http://www.ourwatch.org.uk)

## STOP THE THEFT OF CYCLES AND THE CYCLE OF THEFT

### TRUST LOCKS, NOT LUCK



D-Lock



"Betty the Bike"

Part of an initiative supported by the University of Oxford's Science Together project



science  
together.



Oxford Neighbourhood Watch has teamed up with the University of Oxford's Science Together programme to find out more about bike crime in Oxford and help stop the cycle of theft. In April 2022, we surveyed 760 people who live and/or work in Oxford who currently own a bike, or have owned a bike in the last 5 years.

### KEY RESULTS FROM OUR SURVEY

- 70% of people surveyed used one lock to secure their bikes. 27% used two locks.

**Our recommendation?** Use two different types of lock if possible.

- 82% of people who had their bike stolen had locked it when it was stolen.

**Our recommendation?** Think about where you are locking your bike, and what to. Check out our Top Tips checklist in this leaflet.

- 86% of people who didn't report their stolen bike believed that nothing would be done if they reported it.

**Our recommendation?** Register and mark your bike to make it easier to match back to you if it's found.

## THE BEST WAY TO KEEP YOUR BIKE

### Make your bike difficult to take away and unattractive to sell on

(Look at "Betty", the colourful bike on the first page of this leaflet)

#### LOCK IT EVERY TIME

- Think lock
- Intend to lock
- Make the time
- Every time



#### LOCK IT CORRECTLY

- Use the best D-Lock you can afford
- Avoid using cheap cable locks, which are easily removed
- Two locks are better than one – use another lock to connect wheel to frame
- Consider alternative designs of lock

#### LOCK IT SECURELY

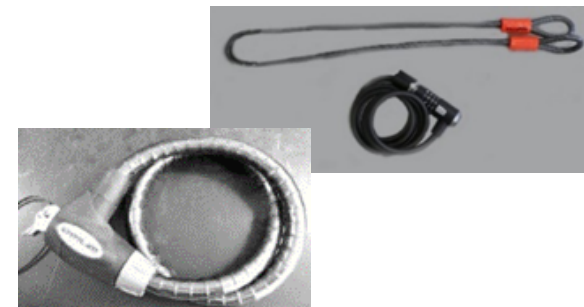
Attach your bike to a fixed point or structure:

- a bicycle stand
- a secure metal post (tall enough so the bike can't be lifted over the top)

What **NOT** to lock to:

- anywhere that it is a hazard to the public, as it may be removed
- objects that might fall over

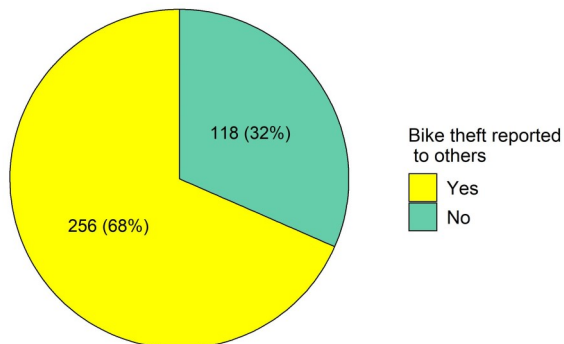
## Less secure types of lock



## Securely locked bikes



Number of people who reported their stolen bike to others (e.g. police 101, police online)



Note: total number of people who had their bike stolen = 374

Safe Cycle Locking <https://www.youtube.com/watch?v=EM500ZJRTxk>